



**Department of
Transportation**

ROARING BROOK COMMUNITY INFORMATIONAL MEETING TACONIC STATE PARKWAY (TSP) AT PUDDING STREET INTERCHANGE

*Town of Putnam Valley, Putnam County
February 7, 2018*



MEETING AGENDA

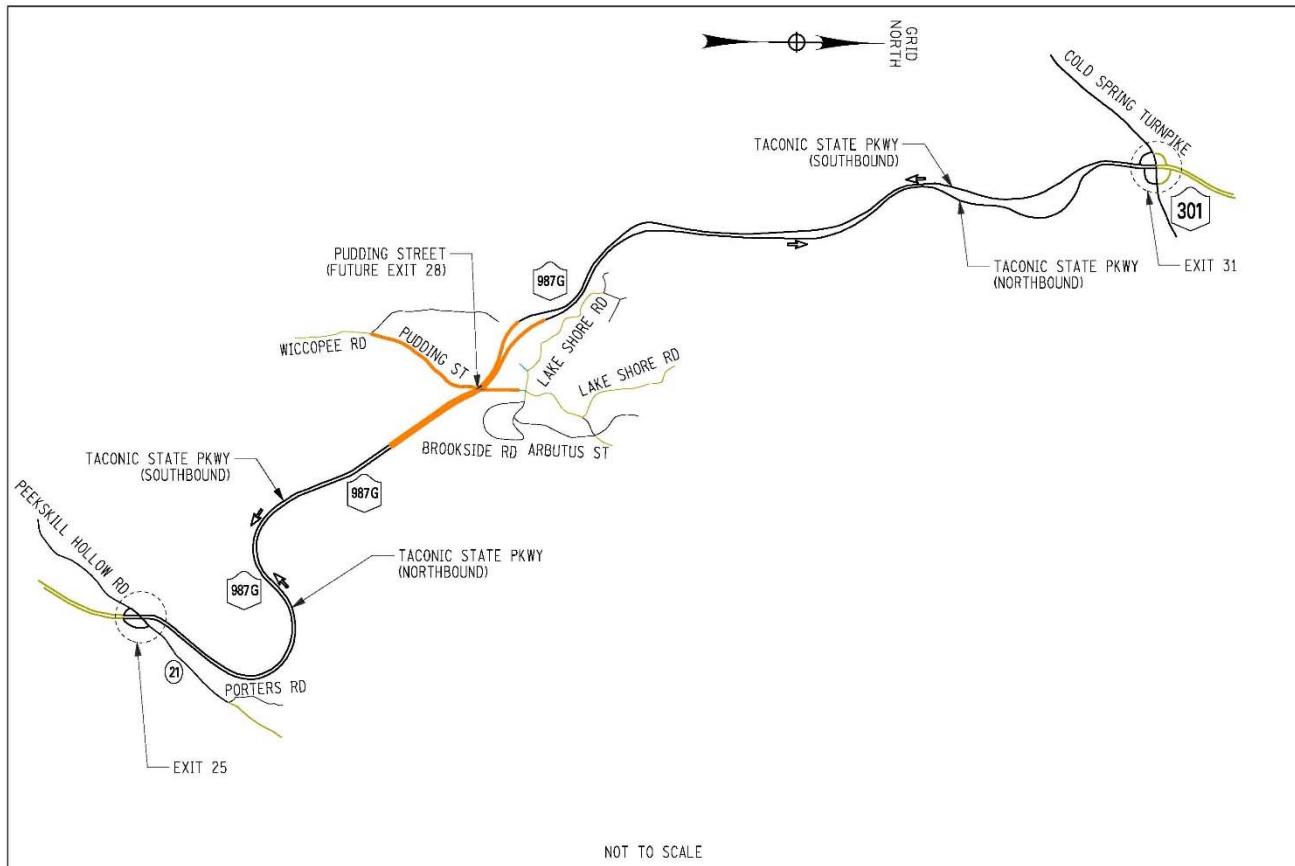
- **Introductions (5 minutes)**
- **Overview of Project Status (5 minutes)**
- **Discuss/Understand Construction Stages Work Zone Traffic Control Priorities (30 minutes)**
- **Questions/Comments**

INTRODUCTIONS

New York State Department of Transportation:

- Mike Schaefer, Regional Design Engineer michael.schaefer@dot.ny.gov
- Heather Pillsworth, Public Information Officer heather.pillsworth@dot.ny.gov
- Mark Kruk, Project Manager, Regional Design Office mark.kruk@dot.ny.gov
- Deyla Olarte, Regional Design Office deyla.olarte@dot.ny.gov
- Jenai Rohlf, Regional Design Office jenai.rohlf@dot.ny.gov
- Paul Salchert, Regional Geotechnical Office paul.Salchert@dot.ny.gov
- Eric Burton, Project Engineer, Main Office Design Bureau eric.burton@dot.ny.gov
- Chris Modafferi, Main Office Design Bureau chris.modafferi@dot.ny.gov

PROJECT LOCATION



OVERVIEW OF PROJECT STATUS

Final Design Milestones:

- NEPA and SEQR Review – Completed in 2016
- Complete Design & NEPA and SEQR Final Design Permitting – January 2019
- Construction Contract Bid Opening – May 2019

Construction Milestones and Expected Timeline:

- Begin Tree Cutting east of TSP (November 2018 and March 2019)
- Begin Construction – Late Summer of 2019
- Complete Stage 1 – Fall 2019 (3-Month Duration)
- Complete Stage 2, Phase 1 – Winter 2019 (2-Month Duration)
- Complete Stage 2, Phase 2 – Spring 2020 (4-Month Duration)
- Complete Stage 3, Phase 1 – Early Summer 2020 (2-Month Duration)*
- Complete Stage 3, Phase 2 – Summer 2020 (3-Month Duration)*
- Substantial Completion – Fall 2020/Spring 2021

WORK ZONE TRAFFIC CONTROL

- Project will be completed in 3 stages and several phases
- Communication provided by:
 - Portable Variable Messaging Devices (PVMS)
 - Mailers (prior to full Pudding Street closure)
 - Communication between Towns and Engineer In Charge (EIC)
 - Travel Advisories sent to the Media
- Notable Work Zone and Traffic Control Measures used during construction:
 - Narrowing of TSP travel lanes to 10 feet
 - TSP work zone speed limit reduced to 45 mph
 - Dedicated police services
 - Single lane closures during non-peak hours
 - Nighttime construction



ANTICIPATED TRAFFIC IMPACTS

- Stage 1 and 2 – No left turn from TSP to Pudding Street
 - 9-Month Duration from Summer 2019 to Spring 2020

- Stage 3 Phase 1 – Pudding Street Closed to the Public
 - 2-Month Duration from Spring 2020 to Early Summer 2020

- Stage 3 Phase 2 – Pudding Street (east of TSP) open to Roaring Brook Community via Northbound On/Off Ramps; Pudding Street (west of TSP) remains closed until substantial completion
 - 3-Month Duration in Summer 2020

- Intermittent closures to Pudding Street and TSP NB/SB during bridge steel installation and rock blasting operations.

WORK ZONE TRAFFIC CONTROL – STAGE 1

Stage 1 (Duration – 3 Months):

- Taconic State Parkway (TSP)
 - Existing TSP Northbound (NB) & TSP Southbound (SB) traffic maintained by shifting lanes towards median on existing alignment.
 - Rumble strips prior to entering work zone
 - No left turns onto Pudding Street (Detour - No Left Turns)
 - Blasting near the project limits will require intermittent closures on TSP NB/SB

WORK ZONE TRAFFIC CONTROL – STAGE 1

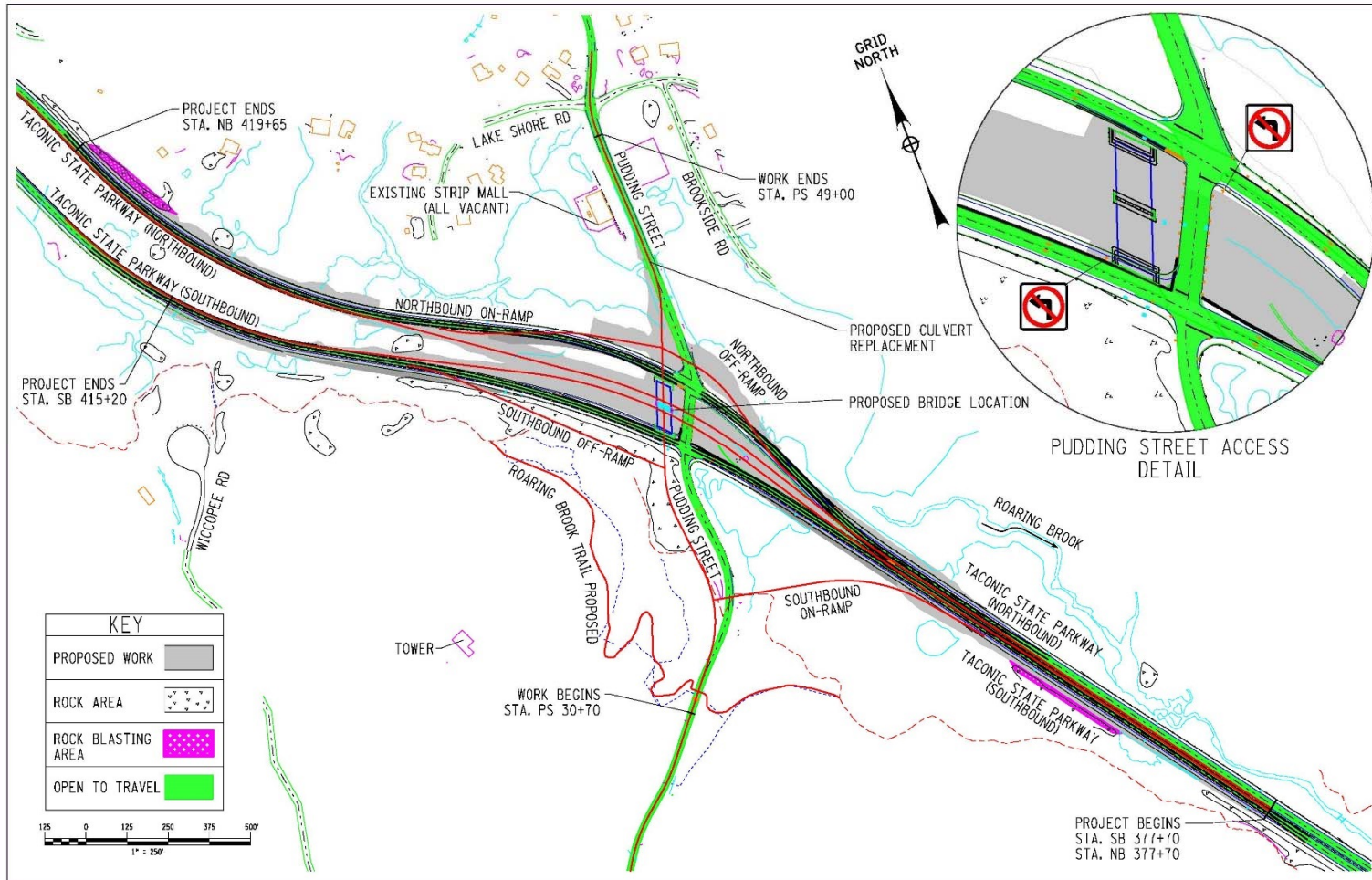
Stage 1 (Duration – 3 Months):

- Pudding Street
 - Maintain Pudding Street crossing and access to TSP.

Stage 1 Completed Work:

- TSP NB and TSP SB acceleration lanes, and TSP SB deceleration lane.
- Bridge foundation, abutments, and pier.
- Rock blasting/removal near project limits.
- Begin construction of TSP NB On/Off-Ramps.

WORK ZONE TRAFFIC CONTROL PLANS – STAGE 1



WORK ZONE TRAFFIC CONTROL – STAGE 2 PHASE 1

Stage 2, Phase 1 (Duration – 2 months):

- Taconic State Parkway (TSP)
 - TSP NB traffic maintained by shifting lanes south of the proposed bridge on to TSP SB lanes and shift traffic to temporary/permanent area completed in Stage 1 north of the proposed bridge.
 - TSP SB traffic maintained by shifting from the inside shoulder to the outside shoulder along deceleration and acceleration lanes and temporary shoulder widening locations completed in Stage 1.
 - Temporary closure needed for bridge steel installation
 - Rumble strips prior to entering work zone
 - No left turns onto Pudding Street (Detour - No Left Turns)

WORK ZONE TRAFFIC CONTROL – STAGE 2 PHASE 1

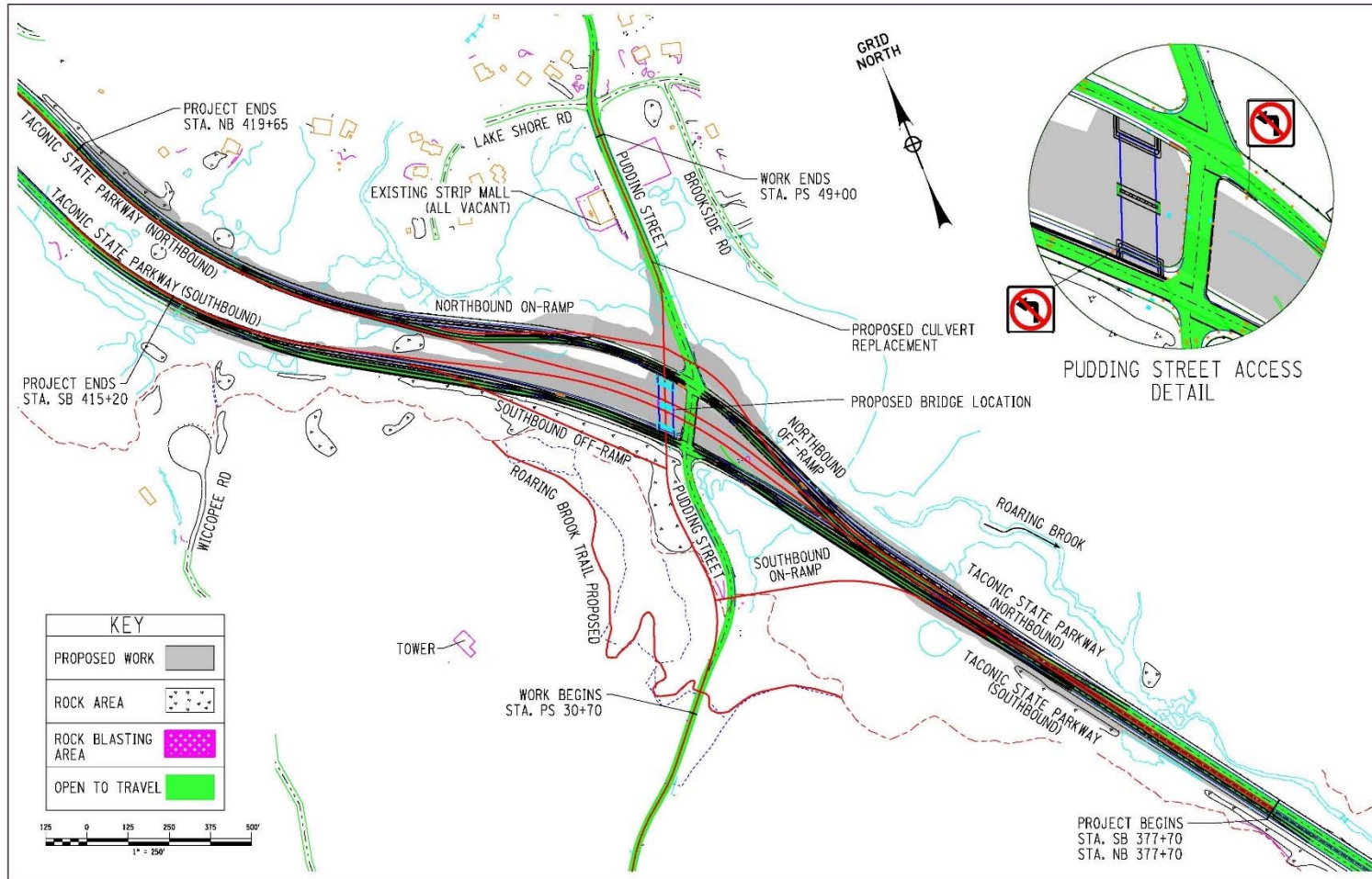
Stage 2, Phase 1 (Duration – 2 months):

- Pudding Street
 - Maintain Pudding Street crossing and access to TSP.

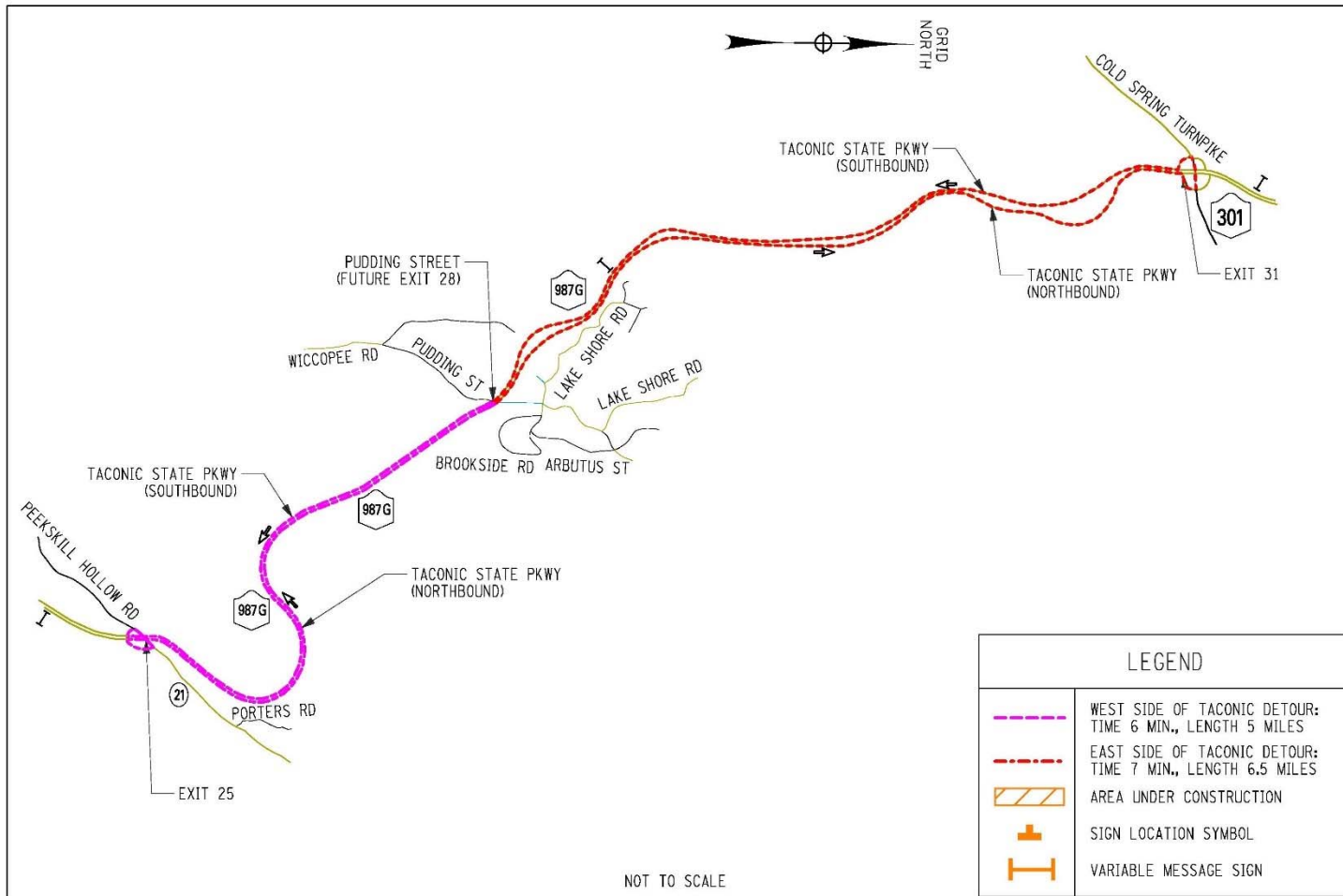
Stage 2, Phase 1 Completed Work:

- TSP NB and TSP SB travel lanes and shoulders (Except TSP NB at Pudding Street crossing).
- Install bridge steel.
- Continue construction of NB On/Off-Ramps.

WORK ZONE TRAFFIC CONTROL PLANS – STAGE 2; P1



WORK ZONE TRAFFIC CONTROL DETOUR – STAGE 2



WORK ZONE TRAFFIC CONTROL – STAGE 2 PHASE 2

Stage 2, Phase 2 (Duration – 4 months):

- Taconic State Parkway (TSP)
 - TSP NB traffic shifted towards NB deceleration and NB acceleration lane and shoulder completed in Stage 1.
 - TSP SB traffic shifted to new SB alignment and SB traffic shifted to acceleration lane and shoulder completed in Stage 1.
 - Blasting will require intermittent closures on TSP NB/SB
 - No left turns onto Pudding Street (Detour - No Left Turns)

WORK ZONE TRAFFIC CONTROL – STAGE 2 PHASE 2

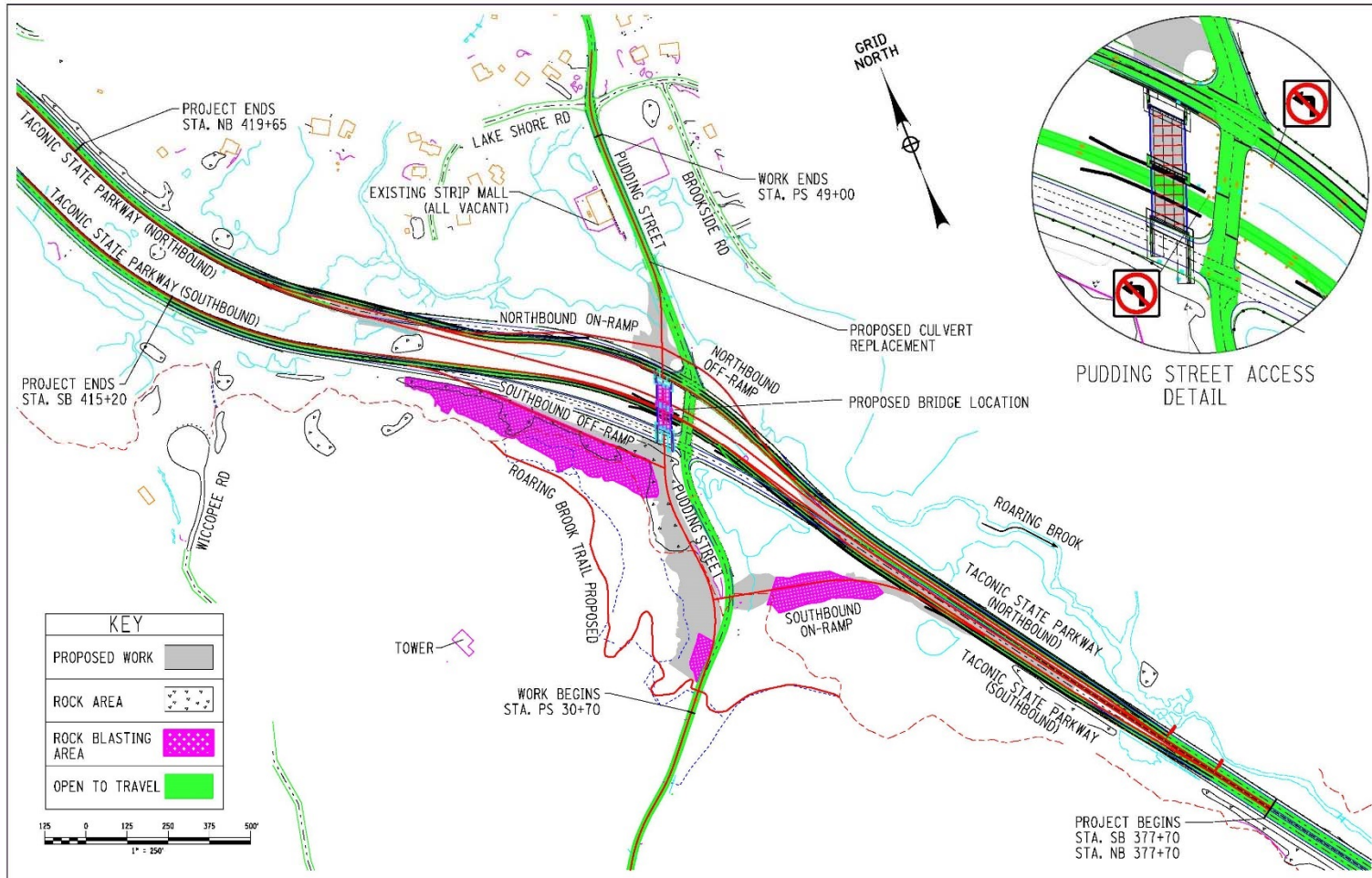
Stage 2, Phase 2 (Duration – 4 months):

- Pudding Street
 - Maintain Pudding Street crossing and access to TSP.
 - Storage on Pudding Street between TSP NB and SB reduced to 75 feet.
 - Blasting will require intermittent closures on Pudding Street.

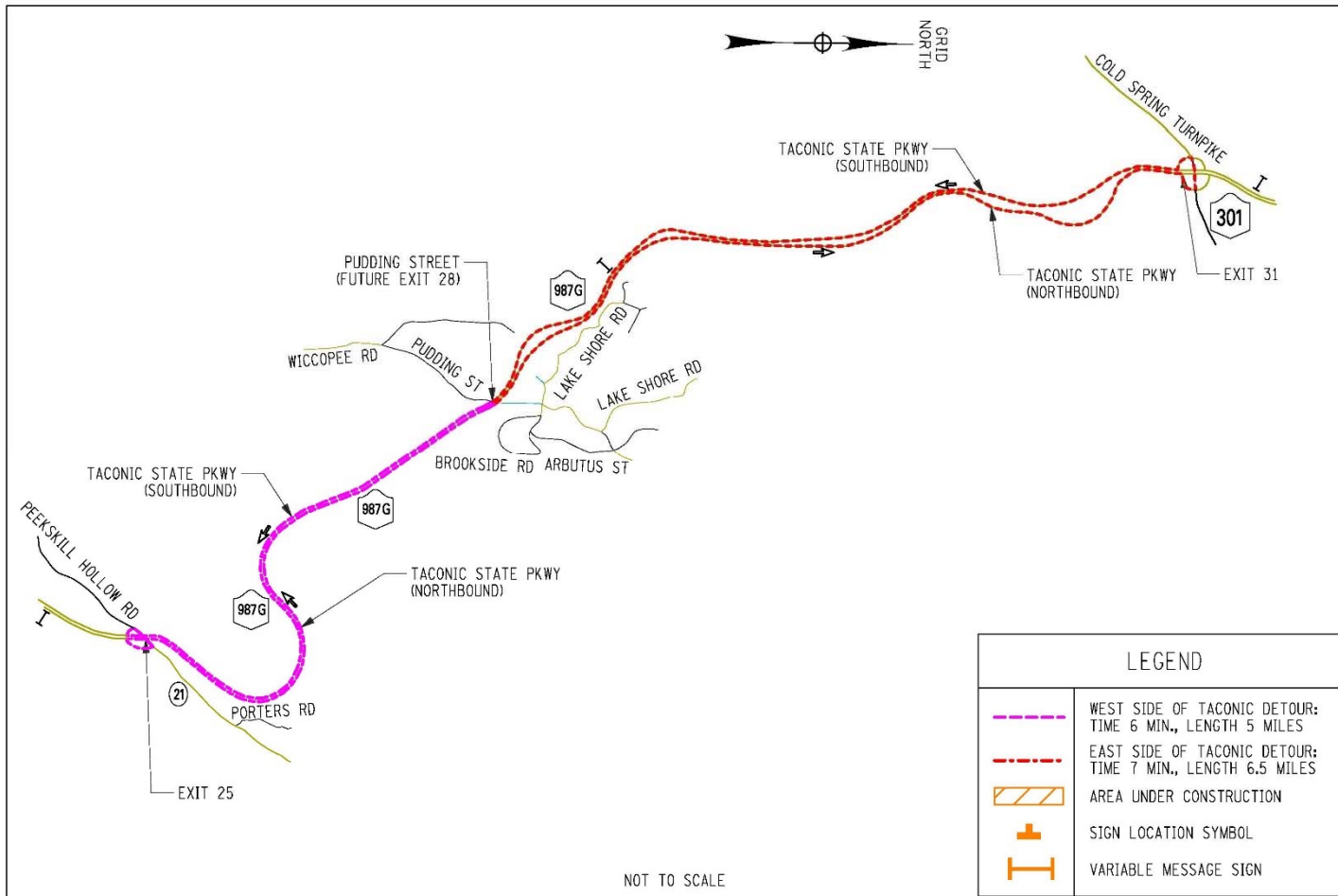
Stage 2, Phase 2 Completed Work:

- Install remaining segments of proposed TSP.
- Rock blasting/removal on SB On/Off-Ramp.
- Continue construction of NB Off-Ramp.

WORK ZONE TRAFFIC CONTROL PLANS – STAGE 2; P2



WORK ZONE TRAFFIC CONTROL DETOUR – STAGE 2



WORK ZONE TRAFFIC CONTROL – STAGE 3 PHASE 1

Stage 3, Phase 1 (Duration – 2 months):

- Taconic State Parkway (TSP)
 - TSP NB traffic shifted to new TSP NB alignment
 - TSP SB traffic completely shifted on new TSP SB alignment
 - Blasting will require intermittent closures on TSP NB/SB
 - Pudding Street completely closed from Wiccopee Road to existing strip mall
 - Detour - Pudding Street Closure Detail
 - Blasting will require intermittent closures on Pudding Street

WORK ZONE TRAFFIC CONTROL – STAGE 3 PHASE 1

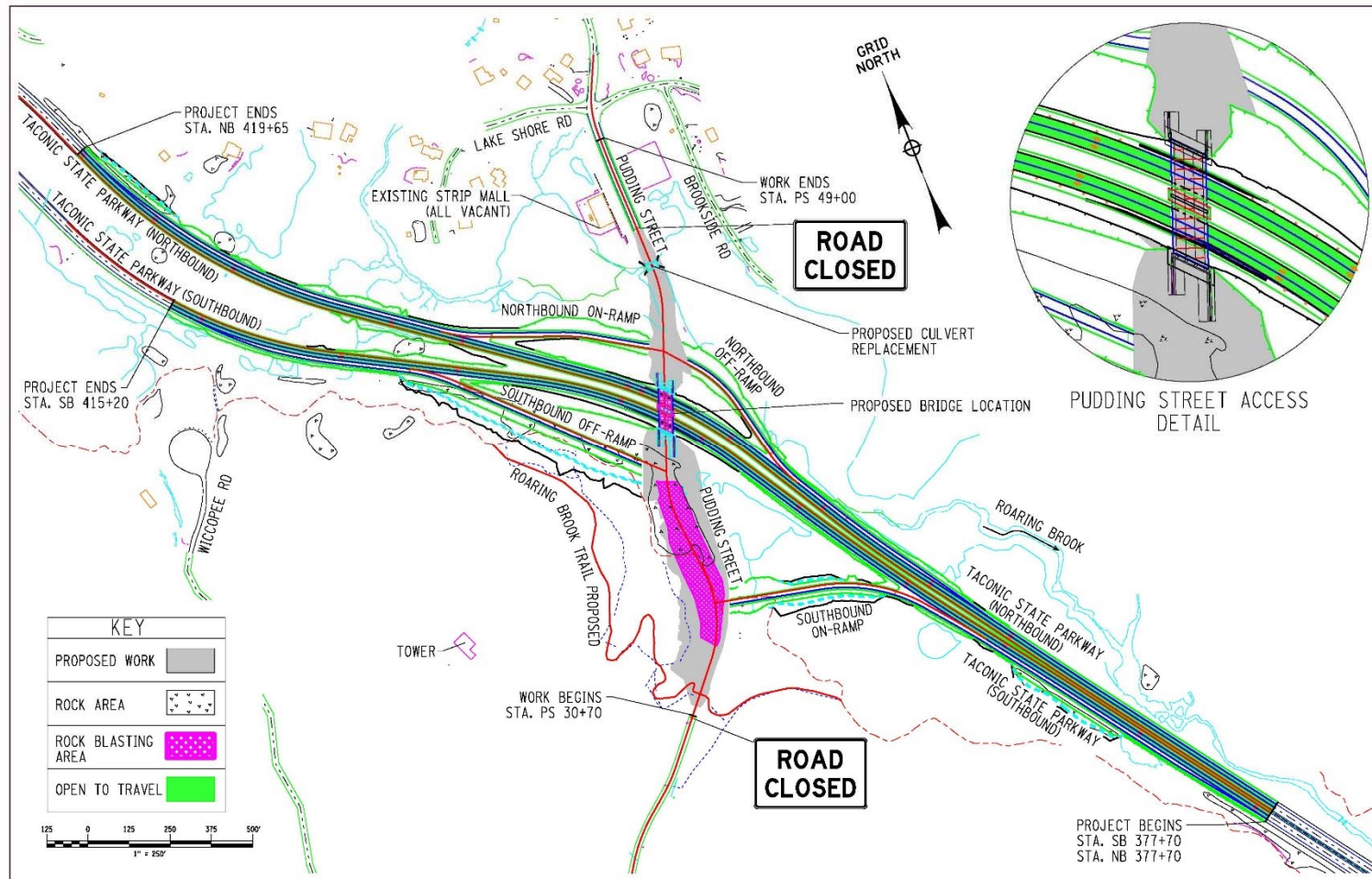
Stage 3, Phase 1 (Duration – 2 months):

- Pudding Street
 - Pudding Street closed, with exception to emergency responder access
 - Pudding Street will be fully closed to all traffic, including emergency responders for a maximum of 3 days for Roaring Brook Culvert replacement
 - All affected emergency responders, Town/Village/City officials, TSP travelers, Roaring Brook Community will be notified at least 14 days in advance using varying messaging methods

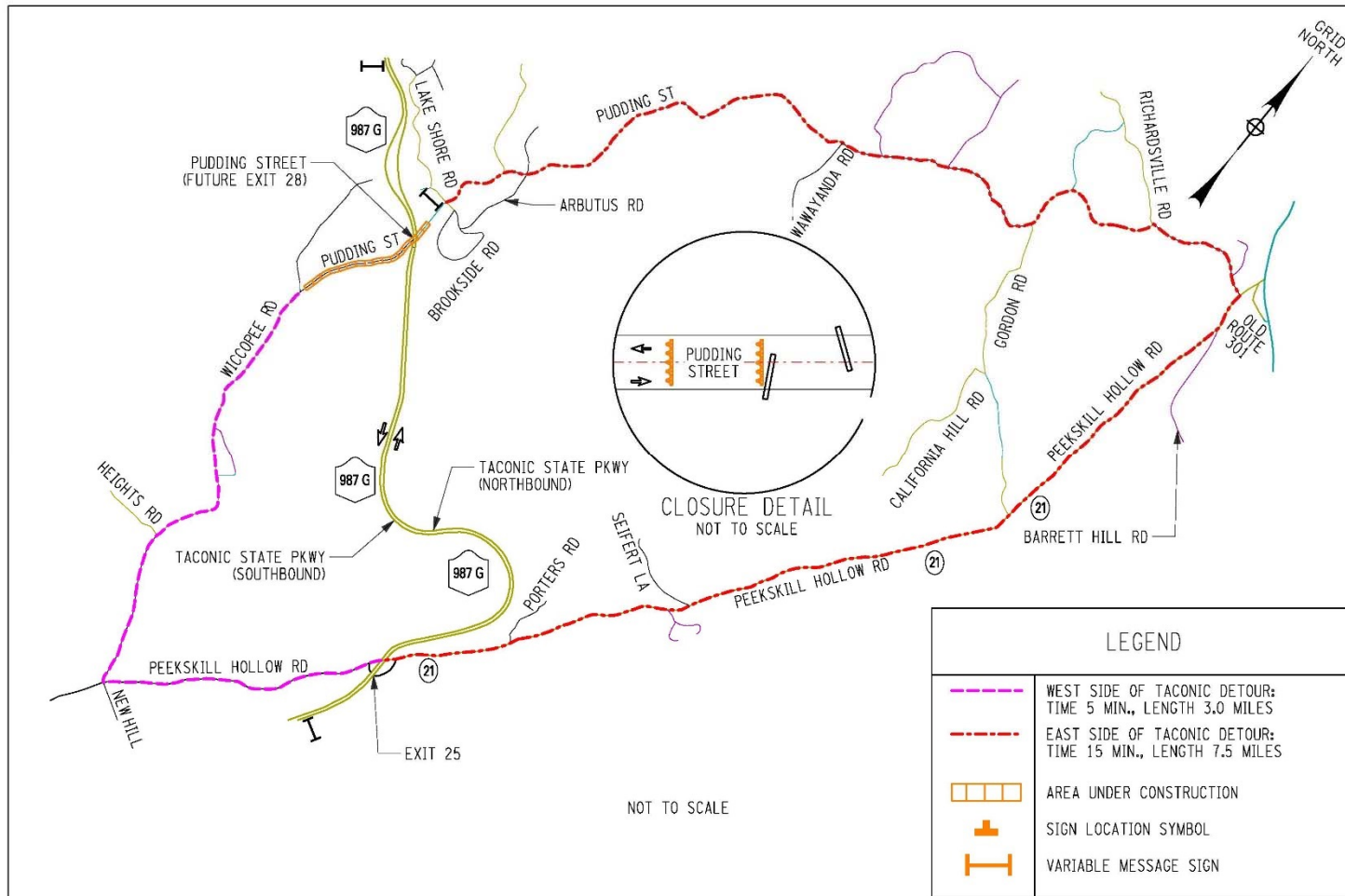
Stage 3, Phase 1 Completed Work:

- Install remaining portions of TSP NB/SB
- Blasting/removal on Pudding Street
- Install U-walls and Roaring Brook Culvert
- Install NB On/Off ramps and Pudding Street Intersection

WORK ZONE TRAFFIC CONTROL PLANS – STAGE 3; P1



WORK ZONE TRAFFIC CONTROL DETOUR – STAGE 3 P1



WORK ZONE TRAFFIC CONTROL – STAGE 3 PHASE 2

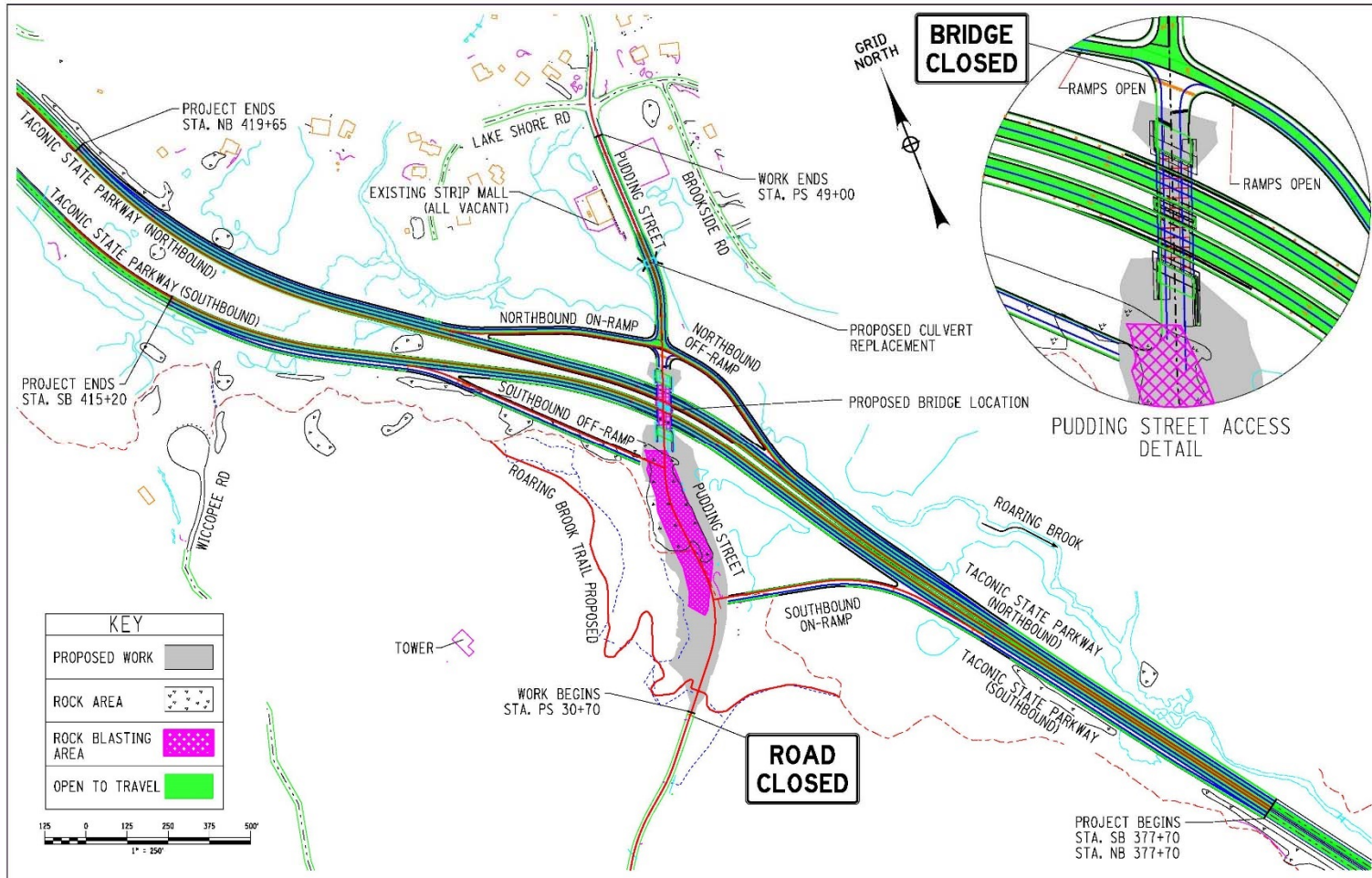
Stage 3, Phase 2 (Duration – 3 Months):

- Taconic State Parkway (TSP)
 - TSP NB traffic maintained on new TSP NB alignment
 - TSP SB traffic maintained on new TSP SB alignment
- Pudding Street
 - Pudding Street (west of TSP) will be closed
 - Pudding Street (east of TSP) will be open with connection to new NB On/Off-Ramps for access to TSP
 - Detour (Pudding Street Closure Detail – Northbound Ramps Open)

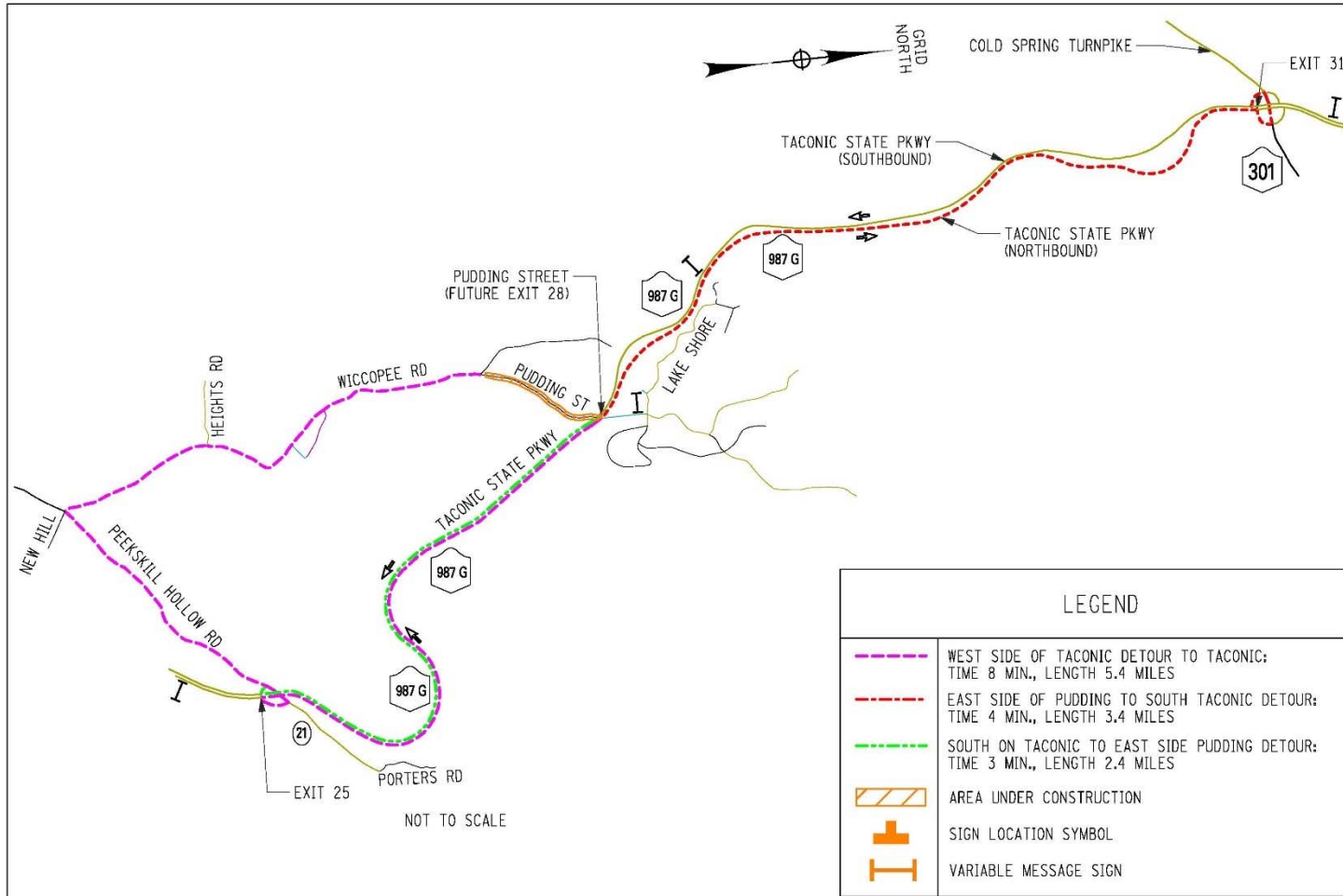
Stage 3, Phase 2 Completed Work:

- Install remaining segments of TSP SB On/Off-Ramp
- Install bridge deck, bridge approach slabs, Roaring Brook Trail, Roaring Brook culvert, Roaring Brook trail parking area

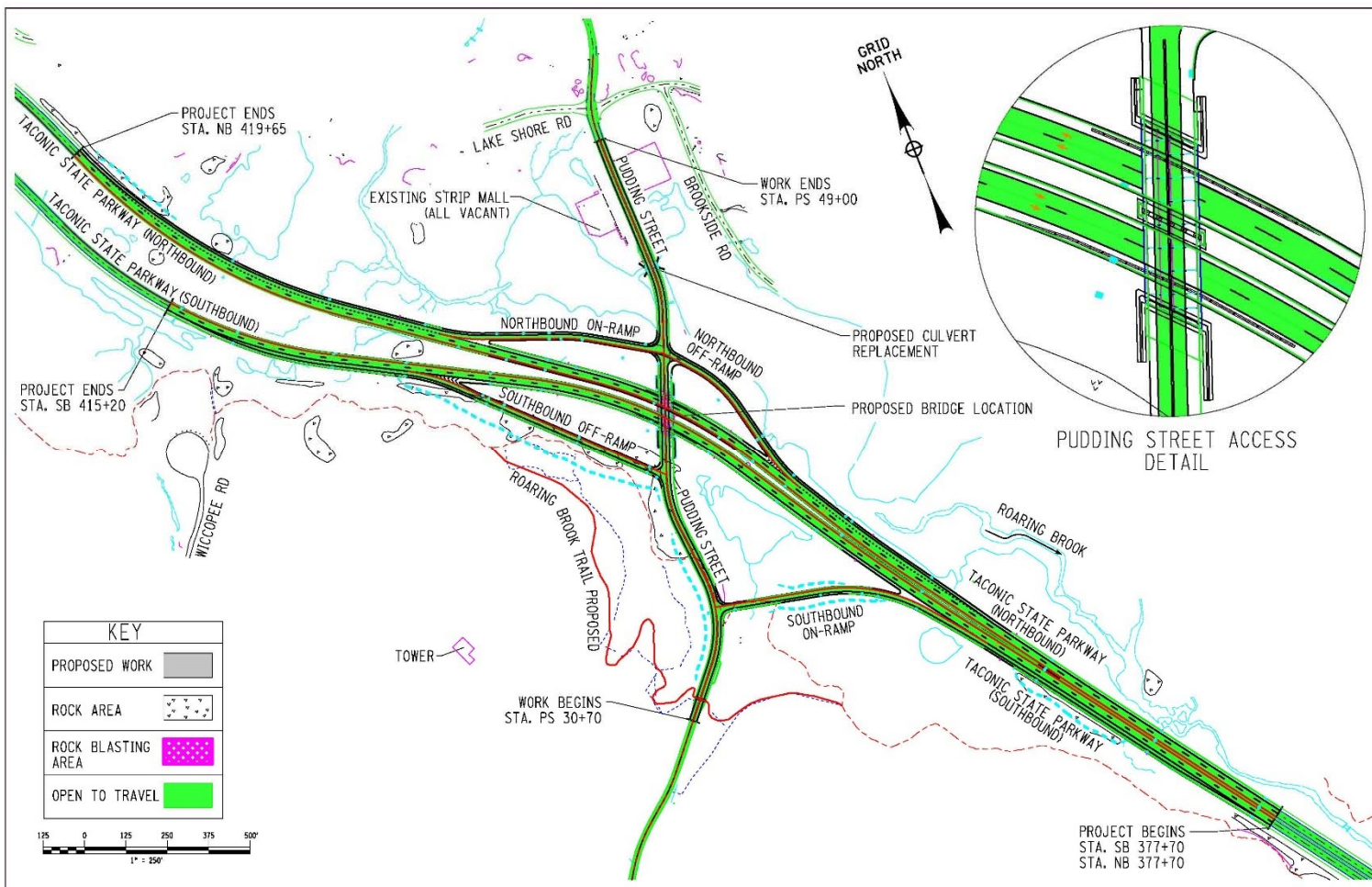
WORK ZONE TRAFFIC CONTROL PLANS – STAGE 3; P2



WORK ZONE TRAFFIC CONTROL DETOUR – STAGE 3; P2 26



FINAL DESIGN PLAN



FINAL DESIGN RENDERING

28



LOOKING SOUTH FROM TSP

CONTACT INFO

Questions/comments can be submitted to:

Mark Kruk, Project Manager
NYS Department of Transportation, Region 8 Design
4 Burnett Boulevard, Poughkeepsie, NY 12603

Email: Mark.Kruk@dot.ny.gov

Please reference PIN 8127.26

Thank You.