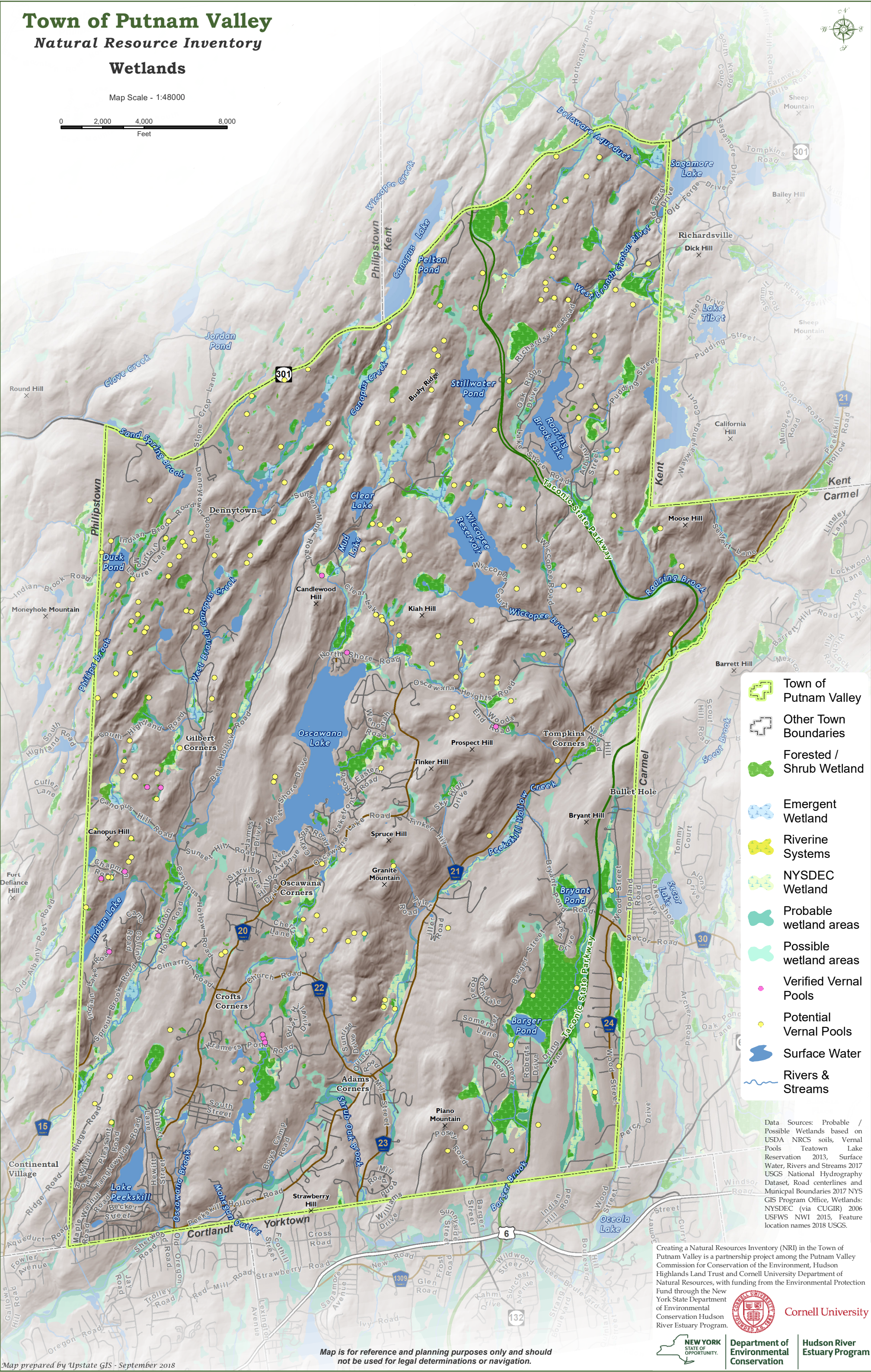
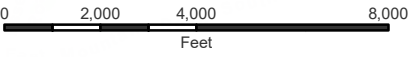


Town of Putnam Valley
Natural Resource Inventory
Wetlands

Map Scale - 1:48000



- Town of Putnam Valley
- Other Town Boundaries
- Forested / Shrub Wetland
- Emergent Wetland
- Riverine Systems
- NYSDEC Wetland
- Probable wetland areas
- Possible wetland areas
- Verified Vernal Pools
- Potential Vernal Pools
- Surface Water
- Rivers & Streams

Data Sources: Probable / Possible Wetlands based on USDA NRCS soils, Vernal Pools Teatown Lake Reservation 2013, Surface Water, Rivers and Streams 2017 USGS National Hydrography Dataset, Road centerlines and Municipal Boundaries 2017 NYS GIS Program Office, Wetlands: NYSDEC (via CUGIR) 2006 USFWS NWI 2015, Feature location names 2018 USGS.

Creating a Natural Resources Inventory (NRI) in the Town of Putnam Valley is a partnership project among the Putnam Valley Commission for Conservation of the Environment, Hudson Highlands Land Trust and Cornell University Department of Natural Resources, with funding from the Environmental Protection Fund through the New York State Department of Environmental Conservation Hudson River Estuary Program.



Cornell University



Department of Environmental Conservation

Hudson River Estuary Program

Map is for reference and planning purposes only and should not be used for legal determinations or navigation.