

**Legend:**

**Zoning Districts**

- CC-1, Community Commercial 1
- CC-2, Community Commercial 2
- CC-3, Community Commercial 3
- HC, Highway Commercial
- NC, Neighborhood Commercial
- LP, Lake Peekskill Residential
- RR, Rural Residential
- CD, Conservation District
- PD, Preservation District

Parcel Boundary

Lakes And Ponds

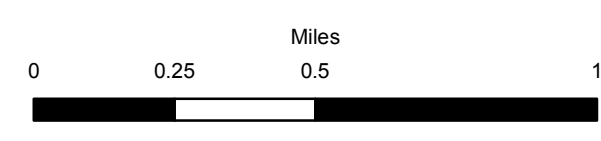
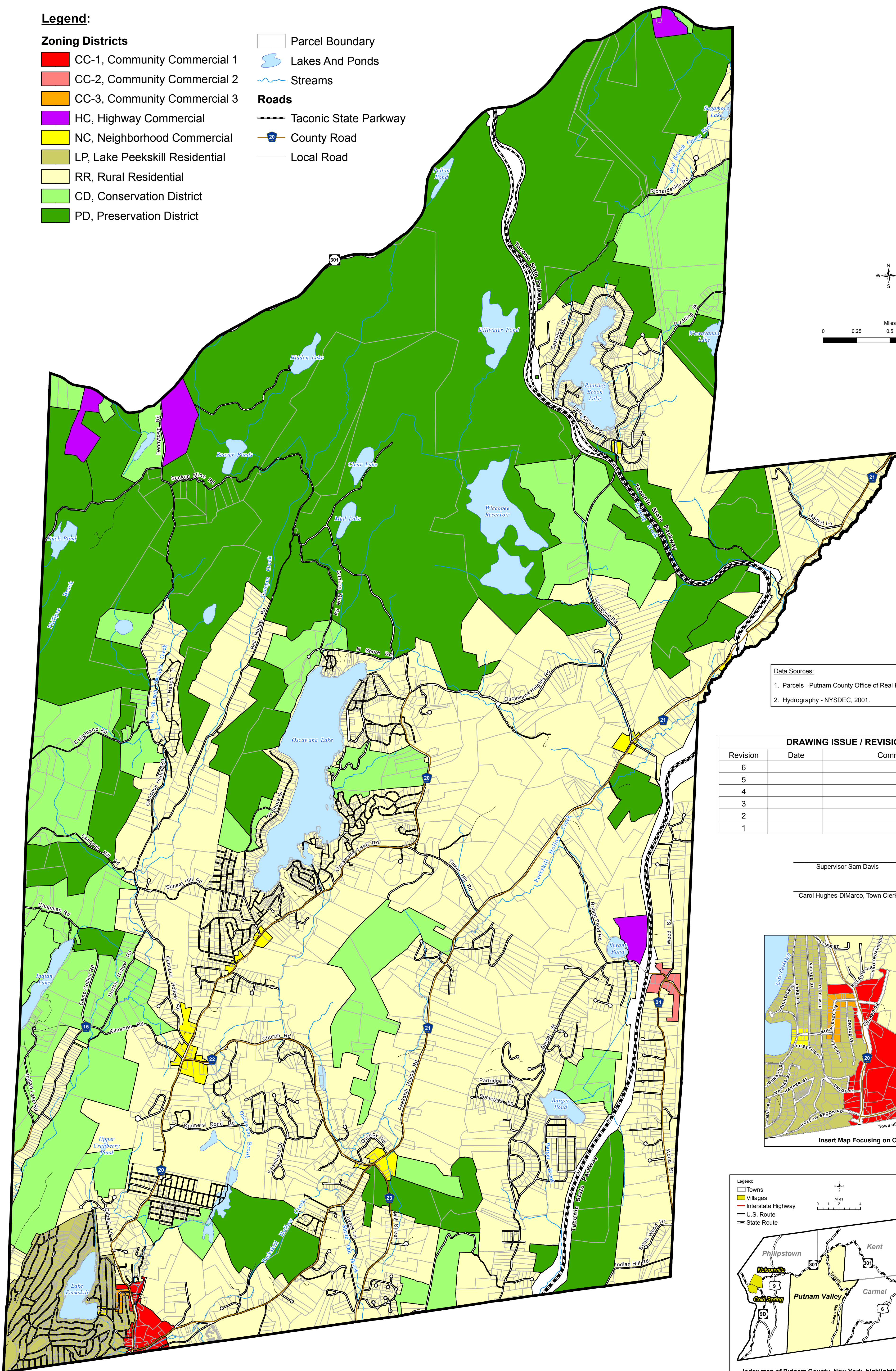
Streams

**Roads**

Taconic State Parkway

County Road

Local Road



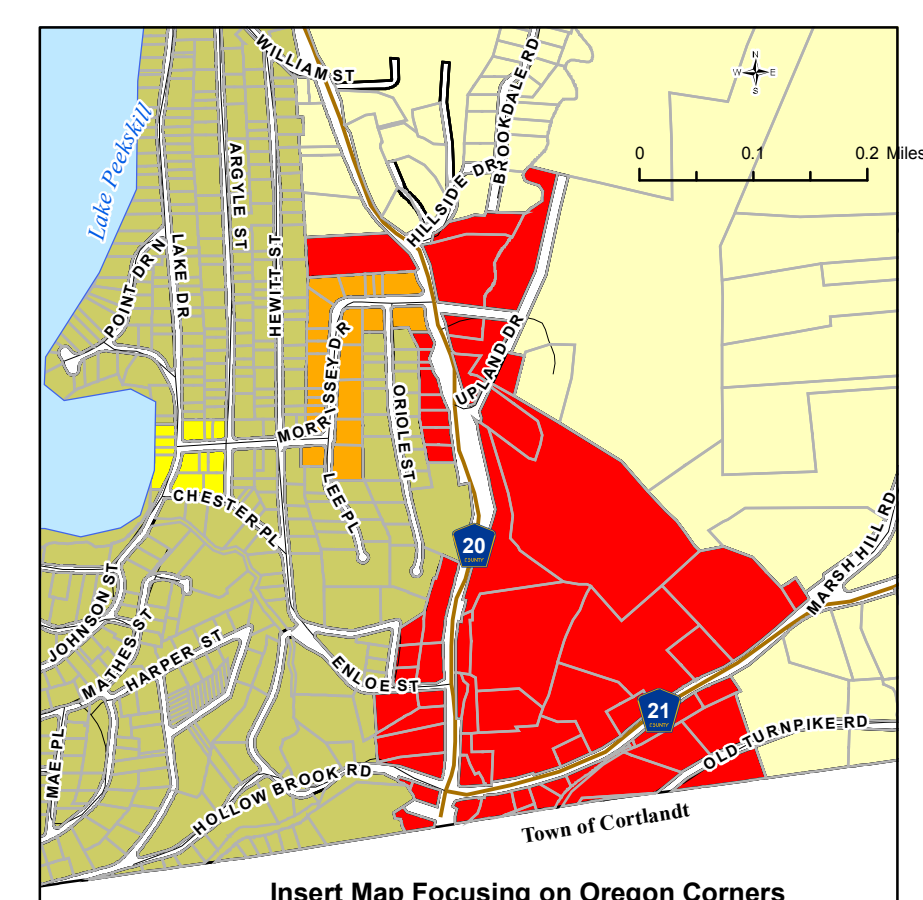
**Data Sources:**  
 1. Parcels - Putnam County Office of Real Property Services, 2006.  
 2. Hydrography - NYSDEC, 2001.

**DRAWING ISSUE / REVISION RECORD**

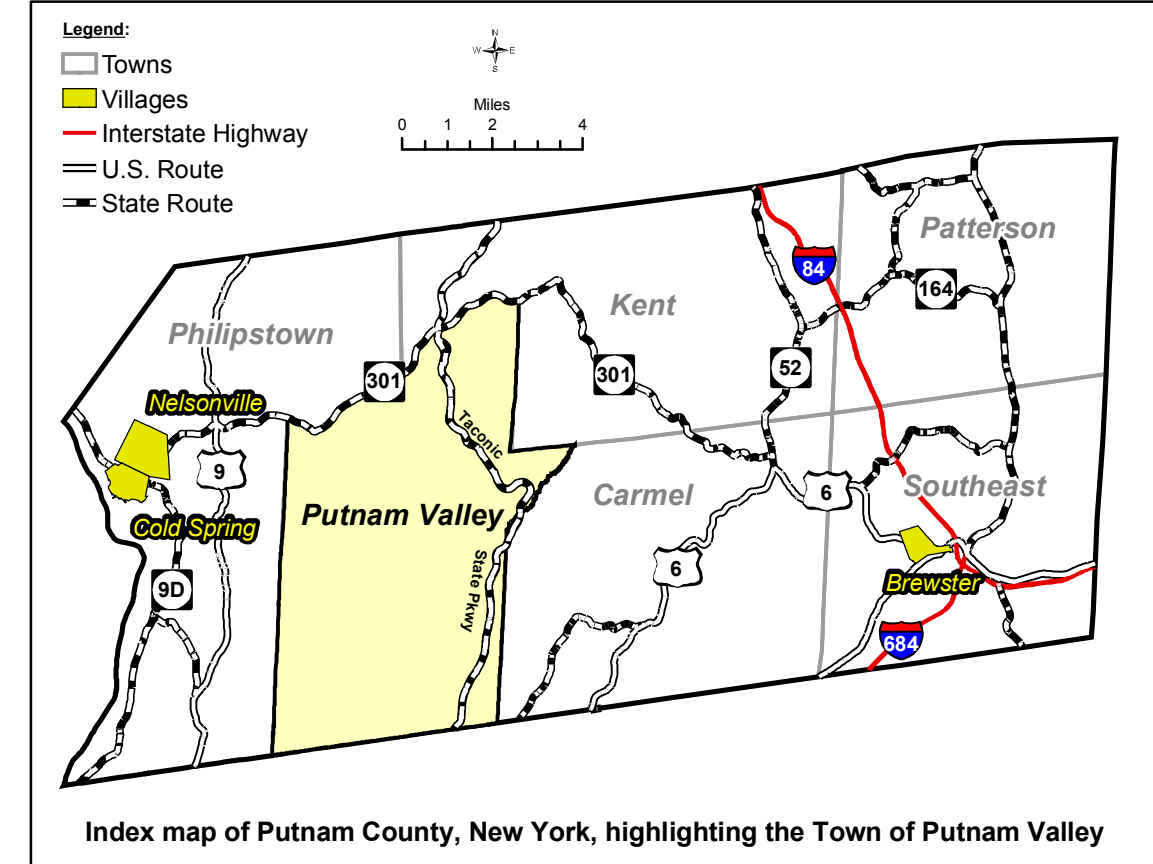
Revision	Date	Comment	Initials
6			
5			
4			
3			
2			
1			

Supervisor Sam Davis \_\_\_\_\_ Date \_\_\_\_\_

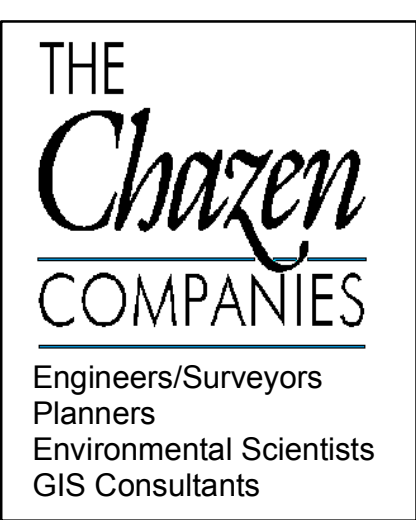
Carol Hughes-DiMarco, Town Clerk \_\_\_\_\_ Date \_\_\_\_\_



Insert Map Focusing on Oregon Corners



Index map of Putnam County, New York, highlighting the Town of Putnam Valley



**CHAZEN ENGINEERING & LAND SURVEYING CO., P.C.**

Dutchess County Office: 21 Fox Street, Poughkeepsie, New York 12601, Phone: (845) 454-3980  
 Orange County Office: 356 Meadow Avenue, Newburgh, New York 12550, Phone: (845) 567-1133  
 Capital District Office: 547 River Street, Troy, New York 12182, Phone: (518) 273-0055  
 North Country Office: 100 Glen Street, Glens Falls, New York 12801, Phone: (518) 812-0513

This map is a product of The Chazen Companies. It should be used for reference purposes only. Reasonable efforts have been made to ensure the accuracy of this map. The Chazen Companies expressly disclaims any responsibilities or liabilities from the use of this map for any purpose other than its intended use.

**Zoning District Map**

Town Of Putnam Valley  
 Putnam County, New York

Created by: CLC/PWC  
 Date: 06/15/2007  
 Scale: 1" equals 1,800'  
**Zoning Map 1 of 3**